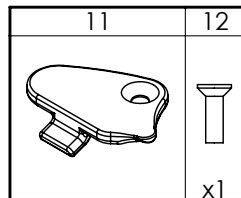
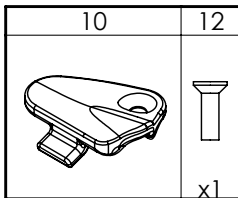
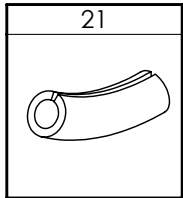
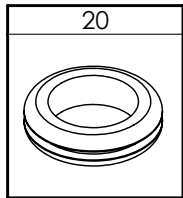
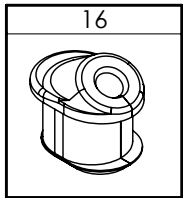
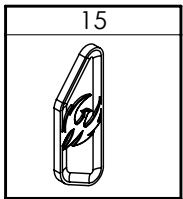
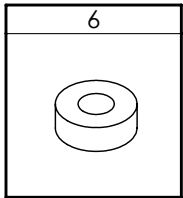
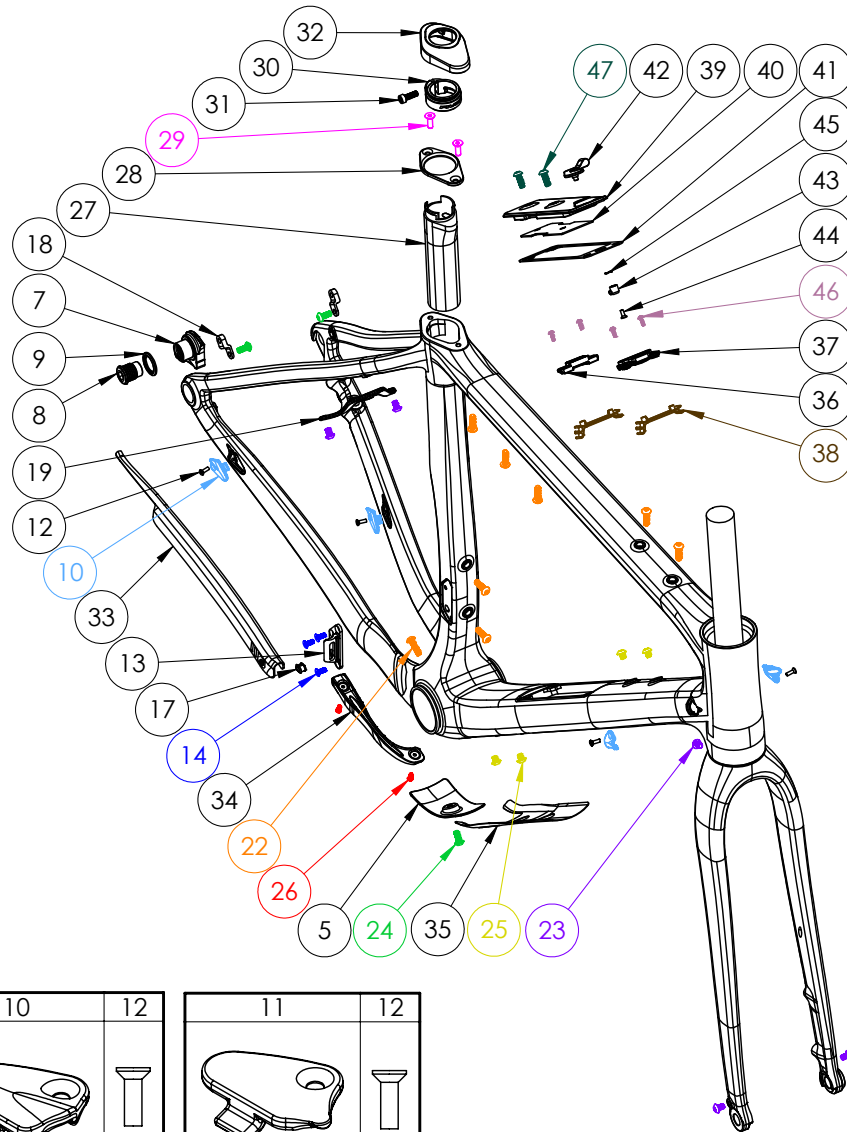


VAULT



HARDWARE NUMBER	PART NUMBER	DESCRIPTION	TORQUE	*
5	FP-CVR-BB-VLT-VI	VAULT BOTTOM BRACKET CABLE PORT COVER		
6	FP-SPCR-M6*14*5-VI	M6X14X5 NYLON SPACER		
7	FP-UDH-TA-12MM-BLK-VI-RI	UNIVERSAL REAR DERAILLEUR HANGER		
8	-	UNIVERSAL REAR DERAILLEUR HANGER BOLT	25 NM (18 LB-FT)	
9	-	UNIVERSAL REAR DERAILLEUR HANGER WASHER		
10	FP-CLM-MECH-FRM-VI	INTERNAL ROUTING CABLE CLAMP		
11	FP-CVR-MECH-FRM-V2	INTERNAL ROUTING HOLE COVER		
12	FP-SCW-FLT-M3*10-BLK	CABLE PORT CLAMP SCREW BLACK	SNUG	
13	FP-FDM-BRZON-VLT-VI-RI	FRONT DERAILLEUR MOUNT (BRAZE-ON)		
14	FP-SCW-FLT-M4*10-VI-RI	M4X10MM FRONT DERAILLEUR MOUNT BOLTS	5 NM (3.7 LB-FT)	
15	FP-PLG-FD-56.8*20.8*3-VI-RI	FRONT DERAILLEUR PLUG		
16	FP-GDE-DI2-7*8*5*2.5	7X8MM DI2 WIRE GUIDE EXT'D FOR DI2 FD		
17	FP-PLG-DI2-7*8*5	7X8MM DI2 PLUG EXT'D		
18	FP-MNT-FDR-LOWER-VI-RI	LOWER FENDER MOUNT		
19	FP-MNT-FDR-UPPER-V2-RI	UPPER FENDER MOUNT		
20	FP-GRM-20MM-BLK-VI-RI	DI2 BATTERY ANTI-RATTLE GROMMET		
21	FP-CLM-DI2-SLV-BLK-VI	DI2 WIRE SLEEVE FOR CABLE CLAMPS		
22	FP-SCW-BTN-M5*8*18-BLK-VI-RI	M5X8.0X18 BLACK WATER BOTTLE BOLTS	SNUG	
23	FP-SCW-BTN-M5*8-VI-RI-BLK	M5X8 BUTTON HEAD SCREW	SNUG	
24	FP-SCW-BTN-M5*12	M5X12 BUTTON HEAD SCREW	SNUG	
25	FP-SCW-BTN-M5*6-BLK-VI-RI	M5X6 BUTTON HEAD SCREW	SNUG	
26	FP-SCW-BTN-M5*12	M3X8 BUTTON HEAD SCREW	SNUG	
27	FP-SLV-STPOST-27.2-V2-RI	27.2MM SEAT POST INSERT		G
28	FP-ISOFLEX-TOP-PLT-VI	SEAT POST TOP PLATE		
29	FP-SCW-FLT-M5*15	M5X15 FLAT HEAD TOP CAP BOLTS	5 NM (3.7 LB-FT)	G
30	FP-CLM-FLXPOST-27.2-V2-RI	27.2MM SEAT POST CLAMP		
31	FP-SCW-SCK-M5*15	SEAT POST CLAMP SCREW	5 NM (3.7 LB-FT)	
32	FP-ISOFLEX-RUB-CAP-VI	SEAT POST CLAMP RUBBER CAP		
33	FP-PRO-VLTV6-CS-VI-RI	CHAINSTAY PROTECTOR		
34	FP-PRO-VLTV6-RD-VI-RI	REAR DERAILLEUR HOUSING PROTECTOR		
35	FP-PRO-VLTV6-DT-XS-XL-VI-RI	DOWNTUBE PROTECTOR (XS)		
35	FP-PRO-VLTV6-DT-XXS-VI-RI	DOWNTUBE PROTECTOR (XS/SM/MD/LB/XL)		
36	FP-SHD-HOOK-VI-RI	TOOL SHED - HOOK INSERT		
37	FP-SHD-CAM-INSRT-VI-RI	TOOL SHED - CAM INSERT		
38	FP-SHD-PLATE-NRRW-VI-RI	TOOL SHED - CABLE CLIP INSERT (NARROW)		
39	FP-SHD-DOOR-VI-RI	TOOL SHED - DOOR		
40	FP-SHD-PAD-VI-RI	TOOL SHED - RUBBER TOOL PAD		
41	FP-SHD-GKT-VI-RI	TOOL SHED - RUBBER GASKET		
42	FP-SHD-LEVER-VI	TOOL SHED - LEVER		
43	FP-SHD-CAM-VI-RI	TOOL SHED - CAM		
44	FP-SCW-FLT-M3*8-VI-RI	TOOL SHED - M3 LEVER ASSEMBLY SCREW	SNUG	
45	FP-SHD-WSH-WAVE-VI-RI	TOOL SHED - LEVER ASSEMBLY WAVE WASHER		
46	FP-SCW-BTN-ST-M3*8-VI-RI	TOOL SHED - M3 INSTALLATION SCREWS	SNUG	
47	FP-BLT-BTN-M5*14-VI-RI-BLK	TOOL SHED - M5X0.8X14 WATER BOTTLE BOLTS	SNUG	
101	100MM THROUGH AXLE	100MM FRONT AXLE	15 NM (11 LB-FT)	G
102	142MM THROUGH AXLE V3	142MM UDH THRU AXLE W/ WASHER V3	15 NM (11 LB-FT)	G
103	-	12MM AXLE WASHER (INCLUDED W/ AXLE)		

BIKE CARE	PRODUCT TYPE	RECOMMENDED PRODUCT
*	GREASE	MOTOREX BIKE GREASE 2000
G	THREAD LOCKER**	LOCTITE THREAD LOCKER #243 (OR EQUIVALENT)
L	GREASE (BOLT SHAFT) / THREAD LOCKER (BOLT THREADS)	SEE ABOVE
G/L	ANTI-SEIZE	MOTOREX COPPER PASTE
A	LIGHT DUTY THREAD LOCKER	LOCTITE THREAD LOCKER #222 (OR EQUIVALENT)
Y	RETAINING COMPOUND	LOCTITE RETAINING COMPOUND #820 (OR EQUIVALENT)

**THREADLOCKER SHOULD ALWAYS BE APPLIED TO THE CORRESPONDING FEMALE THREADS FOR THE BOLT SPECIFIED

